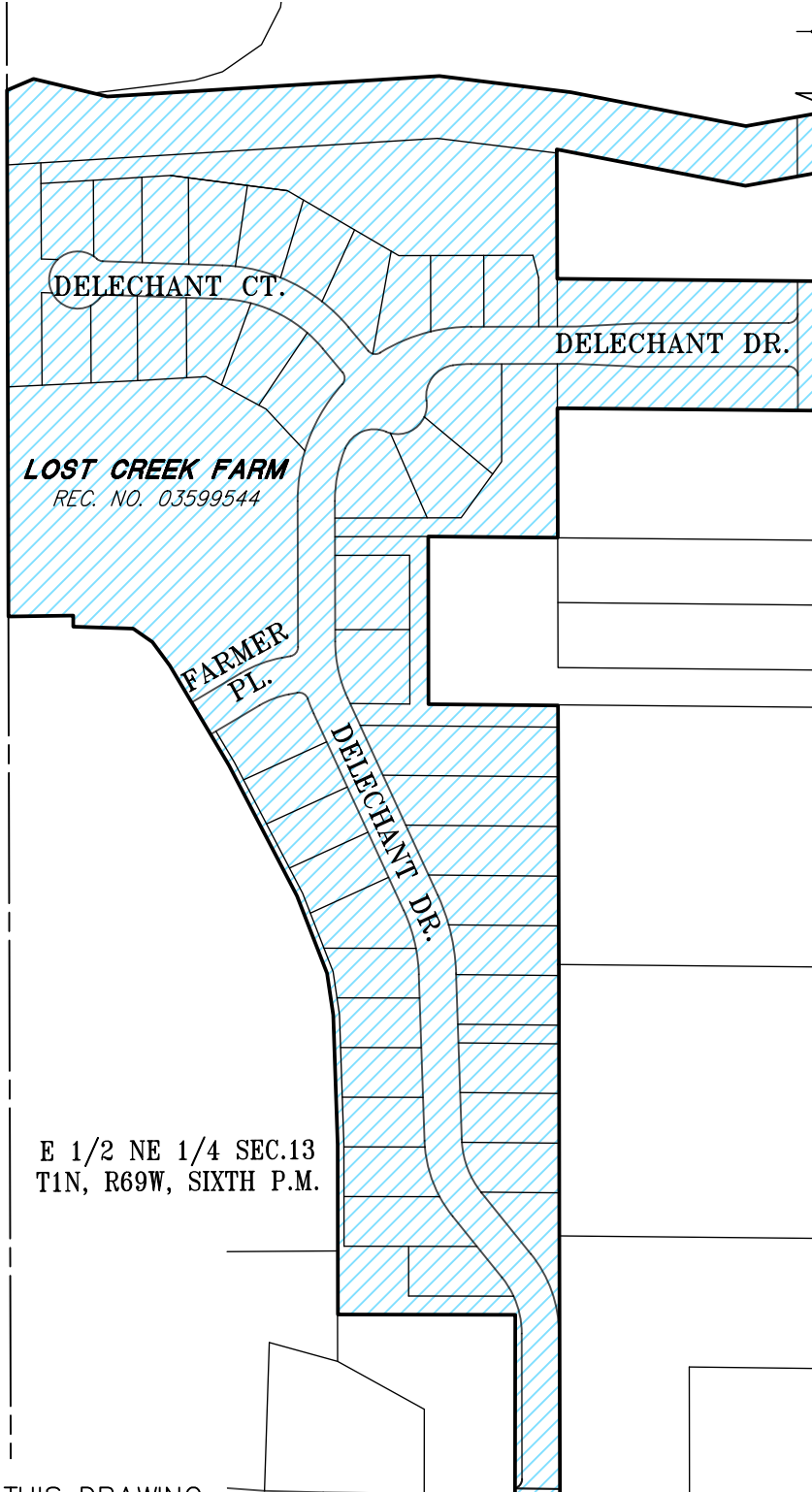


LOST CREEK FARMS METROPOLITAN DISTRICT NO. 66741

LOCATED IN SECTION 13, TOWNSHIP 1 NORTH, RANGE 69 WEST OF THE SIXTH PRINCIPAL MERIDIAN,
TOWN OF ERIE, COUNTY OF BOULDER, STATE OF COLORADO



NE CORNER SECTION 13,
T1N, R69W, 6TH P.M.

COUNTY LINE ROAD

DELECHANT CT.

DELECHANT DR.

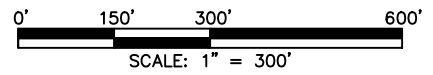
LOST CREEK FARM
REC. NO. 03599544

FARMER
PL.

DELECHANT DR.

E 1/2 NE 1/4 SEC.13
T1N, R69W, SIXTH P.M.

JAY RD.



NOTE: THIS DRAWING
DOES NOT REPRESENT
A MONUMENTED LAND
SURVEY.

E 1/4 SECTION 13,
T1N, R69W, 6TH P.M.

PATH: Q:\49417-06\DWG\EXHIBITS\
DWG NAME: _____
DWG: _____ CHK: DSB
DATE: 12/15/2017
SCALE: 1" = 300'

AZTEC
CONSULTANTS, INC.
300 East Mineral Ave,
Suite 1
Littleton, Colorado 80122
Phone: (303)713-1898
Fax: (303)713-1897
www.aztecconsultants.com

LOST CREEK FARMS DIST MAP.DWG

LEGEND

LOST CREEK FARMS
METROPOLITAN DISTRICT